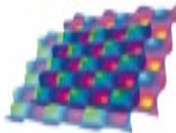


SOLJET PRO III

NEW **XC-540/XC-540W**

54 " Inkjet Printer/Cutter



**Roland
Intelligent
Pass
Control**

New XC-540 Raises the Standard for Quality and Productivity

The new XC-540 takes quality and productivity to the next level with a host of advanced features, including revolutionary new Roland Intelligent Pass Control technology for faster production and better overall imaging. With the XC-540, Roland has integrated its industry acclaimed Print&Cut Technology into one streamlined device, supporting hundreds of media options for outstanding print quality.



Throughput on Banner

Billboard	41 m ² /h (441.39 sqft/hr)
High Speed	28 m ² /h (301.44 sqft/hr)
Standard	14 m ² /h (150.72 sqft/hr)
High Quality	7 m ² /h (75.36 sqft/hr)

Throughput on Vinyl

High Speed	19.2 m ² /h (206.70 sqft/hr)
Standard 1	14 m ² /h (150.72 sqft/hr)
Standard 2	9.3 m ² /h (100.12 sqft/hr)
High Quality	7 m ² /h (75.36 sqft/hr)
Artistic	2.8 m ² /h (30.14 sqft/hr)

*Optionally available DU-540 blower and heater unit is required. *The take-up system does not support contour cutting or white ink printing applications.

Communicate Your Message in Virtually Any Size, Shape and Color



SOLJET PRO III
NEW XC-540

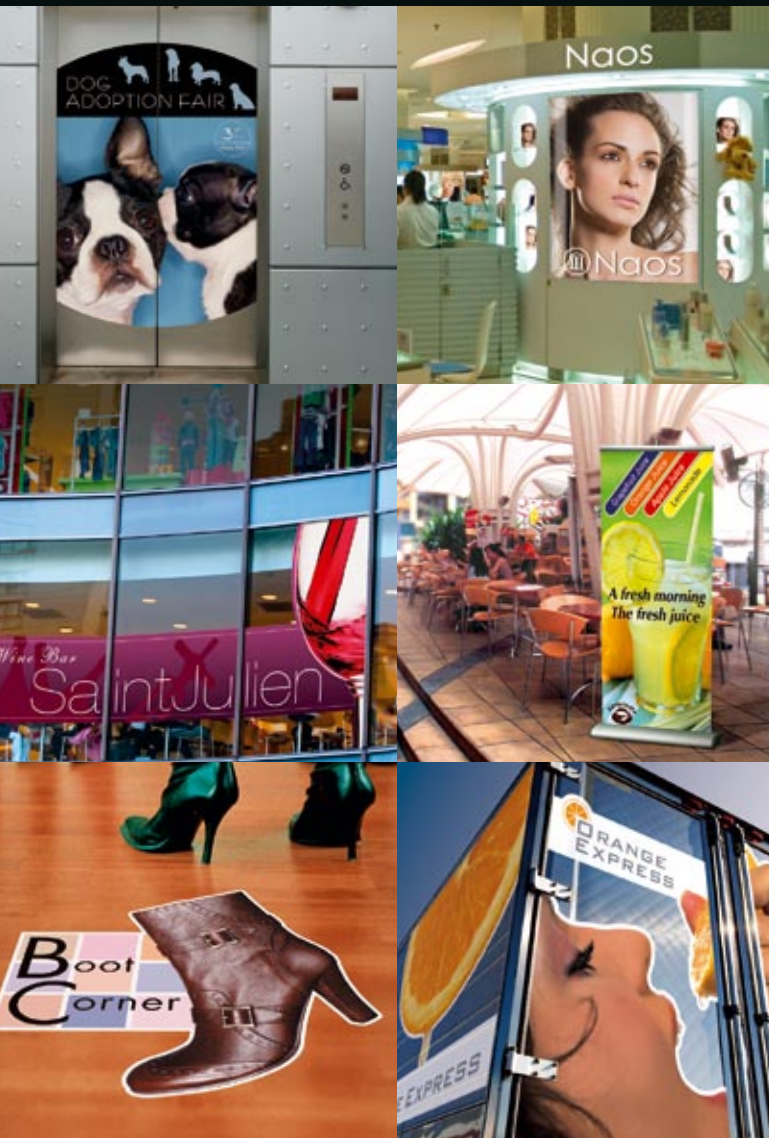
6 Colors
CMYK+LcLm



Outperform the Competition with Profitable White Ink Applications

White
4+ Colors
W+CMYK

SOLJET PRO III
NEW XC-540W



 Roland

SOLJET *TrueColor*
1040



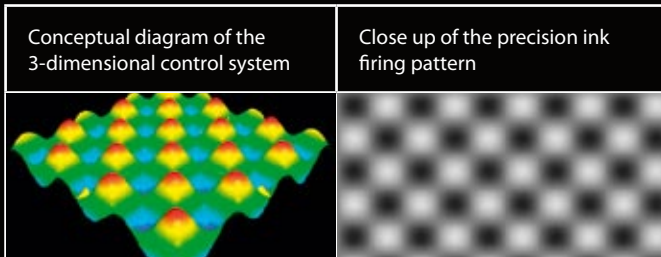
INNOVATIVE – Roland’s 3-Dimensional Technology Enhances Print Quality and Productivity

Roland Intelligent Pass Control is a 3-dimensional system that precisely controls ink firing at the edge of each pass to virtually eliminate banding and deliver the right density for each specific media. As a result, the XC-540 prints unmatched overall image quality with smoother gradations and flawless solid colors in every print mode. Because Roland Intelligent Pass Control optimizes print quality at high speeds, the XC-540 now achieves twice the productivity in Standard print mode on vinyl.*1

*1 Print speeds vary from 37% to 100% faster than the previous model depending on the media and print mode selected.



Smooth gradations across shaded areas
with **Roland Intelligent Pass Control**



POWERFUL – Print Rich, Vivid, On-Target Colors Effortlessly

Roland’s own advanced RIP software is packed with features for the ultimate in color management, ease of use and productivity. Select the Max Impact™ preset for the rich saturated colors and photorealistic images you need to create high-impact outdoor signs and banners. Rely on the Roland Color system for precision spot color matching with powerful reference tools that make communication with your clients easy. With VersaWorks, you are always up to date thanks to Roland@NET which offers more than 150 ICC profiles and automatically updates your system with the latest software version.



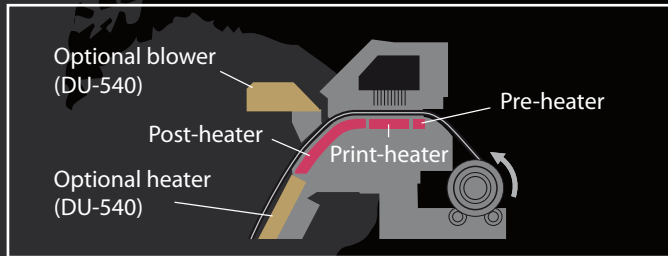
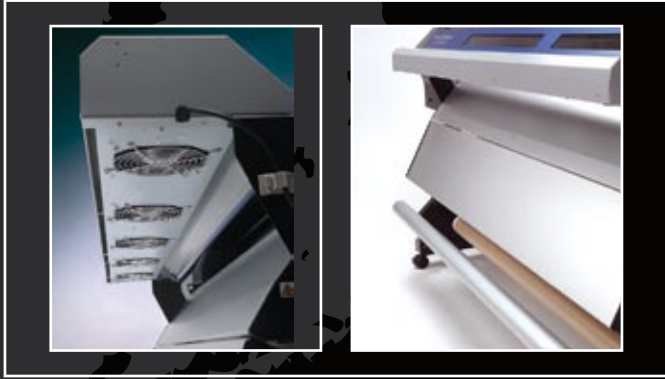
VERSATILE – Print & Contour Cut for Custom Made Results

Roland’s integrated Print&Cut Technology streamlines your production environment and adds value to every graphic you produce. With this efficient, automated system, you can produce print/cut graphics of virtually any shape on one device. Give your customers the ultimate in customization with truly unique labels, decals, signs and point of purchase displays. Operate the XC-540 as a printer, cutter or integrated printer/cutter.



PRODUCTIVE – Powerful Tri-Heater System Accelerates Production

A built-in tri-heater system increases media receptiveness for maximum ink brightness and fastness. An optionally available heater and blower set immediately bonds ink to media, at even the highest speeds.



PRECISE – Heavy-Duty Media Feed and Tracking System for Flawless Results

Roland media movement technologies are designed and constructed for precision media feeding and tracking through the longest unattended production runs. Our heavy-duty take-up system and media flanges work with four media stoppers, positioned on the media shafts, to support large media rolls weighing up to 30kg. Pinch rollers, grit rollers and extended built-in media edge clamps add stability and prevent media curling and ragged edges. (Adjustable rubber hubs securely grip the media roll from within.)



ADVANCED – Dense, Rich Colors with Short Drying Time and Good Scratch Resistance

ECO-SOL MAX is Roland's most advanced eco-solvent ink, offering exceptional color density and gamut. ECO-SOL MAX ink is highly durable, fast drying, scratch resistant, easy to handle and virtually odor free. Choose from 220cc or 440cc cartridges.



EFFICIENT – Low Maintenance System Saves Time, Ink and Running Costs

Roland's automated intelligent maintenance system comes standard on every XC-540. This technology-driven system conserves time by eliminating the need for daily manual maintenance procedures. The new XC-540 also reduces ink consumption through an efficient start-up process that allows the printer to go directly into production after the power is switched on. These and other efficiencies can save you up to 12 ink cartridges per year compared to the previous model when printing on vinyl in High Speed and Standard print modes.*



Print mode	220cc Cartridges saved
High Speed	10
Standard	12

*Test conducted by Roland DG under the following conditions: printed on SV-GG media with the XC-540 and Roland VersaWorks using ECO-SOL MAX inks in CMYKLCm. Printed image and size: SCD of Japanese Standards Association (ISO N5A), 1118.0 mm x 894.4 mm (44.02" x 35.21")

SOLJET PRO III XC Series Specifications

Printing technology		Piezoelectric inkjet
Media	Width	260 to 1,371 mm (10.3 to 54 in.)
	Thickness	Maximum 1.0 mm (39 mil) with liner, for printing
		Maximum 0.4 mm (15 mil) with liner, for cutting
	Roll outer diameter	Maximum 180 mm (7 in.)
	Roll weight	Maximum 30 kg (66 lb.)
Core diameter	50.8 mm or 76.2 mm (2 in. or 3 in.)	
Printing/cutting width *1		Maximum 1,346 mm (53 in.)
Ink cartridges	Types	Roland ECO-SOL MAX INK
	Capacity	220 cc or 440 cc
	Color	XC-540: six colors (cyan, magenta, yellow, black, light cyan, and light magenta) XC-540W: five colors (cyan, magenta, yellow, black and white)
Printing resolution (dots per inch)		Maximum 1,440 dpi
Cutting speed		10 to 600 mm/s (10 to 300 mm/s in media-feed direction)
Blade force		30 to 300 gf
Blade offset		0.000 to 1.500 mm (0 to 0.0591 in.)
Software resolution (when cutting)		0.025 mm/step (0.000984 in./step)
Distance accuracy (when printing) *2 *3		Error of less than ±0.3% of distance traveled, or ±0.3 mm, whichever is greater
Distance accuracy (when cutting) *3		Error of less than ±0.4% of distance traveled, or ±0.3 mm, whichever is greater When distance correction has been performed (when the setting for [CUTTING MENU] - [CALIBRATION] has been made): Error of less than ±0.2% of distance traveled, or ±0.1 mm, whichever is greater
Repeatability (when cutting) *3 *4		±0.1 mm or less
Alignment accuracy for printing and cutting *3 *5		±0.5 mm or less
Alignment accuracy for printing and cutting when reloading media *3 *6		Error of less than ±0.5% of distance traveled, or ±3 mm, whichever is greater
Media heating system *7		Print heater/preheater, setting range for the preset temperature: 30 to 50°C (86 to 122°F) Dryer, setting range for the preset temperature: 30 to 55°C (86 to 130°F)
Connectivity		Ethernet (10BASE-T/100BASE-TX, automatic switching)
Power-saving function		Automatic sleep feature
Power requirements		AC 100 to 120 V ±10%, 13A, 50/60 Hz or AC 220 to 240 V ±10%, 7A, 50/60 Hz
Power consumption	During operation	Approx. 1,600 W
	Sleep mode	Approx. 47 W
Dimensions (with stand)		2694 (W) x 1103 (D) x 1260 (H) mm (106 (W) x 43.4 (D) x 49.6 (H) in.)
Weight (with stand)		197 kg (434.3 lb.)
Environmental	Power on	Temperature: 15 to 32°C (59 to 90°F) [20°C (68°F) or more recommended], Humidity: 35 to 80% (no condensing)
	Power off	Temperature: 5 to 40°C (41 to 104°F), humidity: 20 to 80% (no condensing)
Accessories		Stand, power cord, blade, blade holder, media clamps, replacement blade for separating knife, cleaning kit, software RIP, user's manual, etc.

Heater and Blower (DU-540) Specifications

Dryer unit *7	Heating type (with blower fan), setting range for the preset temperature: 30 to 55°C (86 to 130°F)	
Power requirements	Voltage and frequency	AC 100 to 120V ±10%, 50/60 Hz or AC 220 to 240 V ±10%, 50/60 Hz
	Power capacity *8	5 A (100 to 120V) or 3 A (220 to 240 V)
Power consumption	Approx. 650 W	
Dimensions including printer	2,694 (W) x 1,210 (D) x 1,260 (H) mm	
Weight including printer	217 kg	

Roland VersaWorks System Requirements

Operating system	Windows Vista™ Ultimate or Business (32-bit edition), or Windows® XP Professional Service Pack 2, or Windows® 2000 Service Pack 4
CPU	Pentium 4, 2.0 GHz or faster recommended
RAM	1 GB or more recommended
Free hard-disk space	40 GB or more recommended

- The length of printing or cutting is subject to the limitations of the program.
- Using Roland specified media, print travel of 1m, temperature: 25°C (77°F), humidity: 50%RH
- Not assured when the print heater or dryer is used.
- Using Roland specified media, loaded on the shaft, [PREFEED] menu item must be set to "ENABLE," with 25 mm or more for both right and left margins and 35 mm or more front margin, excluding expansion or contraction of the media. Media 610 mm wide or over and 4,000 mm long. Media 610 mm wide or less and 8,000 mm long.
- Provided that media length is under 3,000 mm. Temperature: 25°C (77°F). Excluding possible shift caused by expansion/contraction of the media and/or by reloading the media.
- Using Roland specified media, data size: 1,000 mm in the media-feed direction, 1,346 mm in the carriage-movement direction. No lamination. Automatic detection of crop marks at 4 points when media is reloaded. During cutting, [PREFEED] menu item must be set to "ENABLE." Temperature: 25°C (77°F). Excludes the effects of slanted movement and of expansion and contraction of the media.
- Warm-up is required after powerup. This may require 5 to 20 minutes, depending on the operating environment. The preset temperature may fail to be reached depending on the ambient temperature and media width.
- Be sure to check the breaker capacity and use separate power-outlets for the printer and the dryer.

Options	Model	Description	Options	Model	Description
ECO-SOL MAX Ink 440cc	ESL3-4MG	Magenta	ECO-SOL MAX Ink 220cc	ESL3-MG	Magenta
	ESL3-4YE	Yellow		ESL3-YE	Yellow
	ESL3-4CY	Cyan		ESL3-CY	Cyan
	ESL3-4BK	Black		ESL3-BK	Black
	ESL3-4LC	Light cyan		ESL3-LC	Light cyan
	ESL3-4LM	Light magenta		ESL3-LM	Light magenta
Cleaning liquid	SL-CL	1 pc.	Blade holder	XD-CH2	Blade holder with blade extension adjuster, made of aluminum
Blades	ZEC-U1005	For thick, reflective and fluorescent vinyl, 5pcs.	Heater and blower	DU-540	For XC-540/XC-540W
	ZEC-U5025	For thick, reflective and fluorescent vinyl, 5pcs.			

ABOUT WHITE INK

- The pigment in white ink will settle in the cartridge and ink flow system.
- Due to the nature of white ink, you must shake the cartridge before each use and perform periodic maintenance to prevent clogged nozzles.
- We recommend using a drying system to dry white ink thoroughly before printing CMYK over white ink.
- Some color shift may occur when printing CMYK over white ink.
- White ink offers less longevity than CMYK and is affected by environmental conditions.

ISO 14001:2004 and ISO 9001:2000 Certified

Roland pursues both environmental protection and continuous quality improvement. Under the philosophy of preserving the environment and human health, Roland is actively working to abolish organic solvents in production, to reduce and recycle waste, to reduce power use, and to purchase recycled products. Roland constantly strives to provide the most highly reliable products available.



Roland reserves the right to make changes in specifications, materials or accessories without notice. Your actual output may vary. For optimum output quality, periodic maintenance to critical components may be required. Please contact your Roland dealer for details. No guarantee or warranty is implied other than expressly stated. Roland shall not be liable for any incidental or consequential damages, whether foreseeable or not, caused by defects in such products. All trademarks are the property of their respective owners.



AUTHORIZED DEALER:

Printed in Belgium RDG2008010201

www.rolanddg.eu